

HOT SPOTS IN CLEVELAND

Include check payable to Friends of the Snite Museum. Due: Friday, February 8
Mail to: P.O. Box 368, Notre Dame IN 46556. Call the Friends office with any questions: 574.631.5516

Name(s) _____
 Address _____
 City _____ State _____ Zip _____
 E-mail _____ Cell Phone _____
 Amount Paid \$ _____

For Credit Card Payment go to: sniteartmuseum.nd.edu/tours

Hotel Single Occupancy Double Occupancy, roommate name: _____

Dietary restrictions _____

The Notre Dame Office of Risk Management requires that the Museum obtain each participant's signature on a release form prior to departure. This form will be mailed along with the campus parking map and permit upon receipt of completed registration form and payment.



The Glidden House

The Glidden House is an AAA-rated Three Diamond boutique hotel that invites its guests to indulge in both its compelling history and contemporary luxury. Built in 1910, it enjoys a place on the National Register of Historic Places. The home represents the French Gothic Eclectic style of architecture that was prevalent in the neighborhood in that era. It is a gallery in its own right, with a souvenir catalog to view its private collection.

Members of the Friends of the Snite Museum of Art

Share double room (each).....\$300
 Single room.....\$395

Non-Member

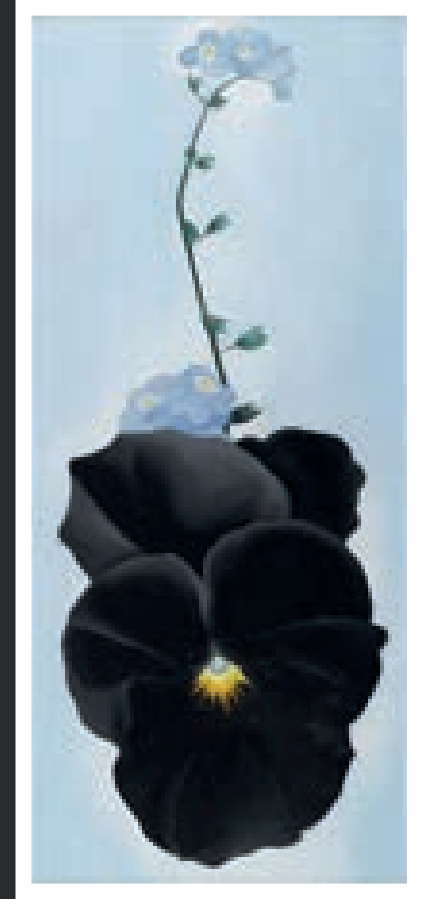
Share double room (each).....\$330
 Single room.....\$425

Please note all that is included in the price! Historic hotel accommodations with complimentary breakfast, three museums with docent-led tours, dinner in Little Italy, transportation and bus driver gratuity. Two lunches are on your own.

FEBRUARY 8 IS THE DEADLINE TO MAKE RESERVATIONS



HOT SPOTS IN CLEVELAND



Black Pansy & Forget-Me-Not's (Pansy), 1926. Georgia O'Keefe (American, 1887-1986). Oil on canvas, 66.9 x 31.1 cm (27 1/8 x 12 1/4 in.). Brooklyn Museum, Gift of Mrs. Alfred S. Rossin, 28.521. © Georgia O'Keefe Museum. Photo: Christine Gant, Brooklyn Museum

FEBRUARY 27 & 28, 2019



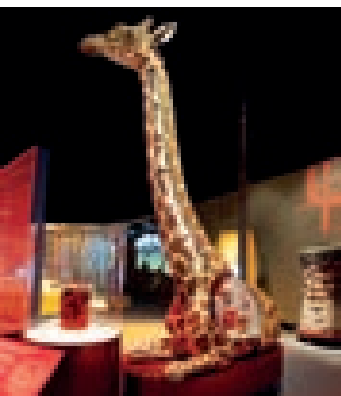
FRIENDS of the
SNITE MUSEUM of ART



Western Reserve History Center

Cleveland History Center's newest exhibit, *Cleveland Starts Here*® is sponsored by the Jack, Joseph and Morton Mandel Foundation. First-time visitors and life-long residents will immerse themselves in Cleveland's stories from the 1790s to today. Using the latest technologies and digital media, rarely seen images, films, art and historical artifacts are now accessible for visitors to experience. In addition to *Cleveland Starts Here*®, there will be opportunity to visit two historic mansions, a costume wing, a WWI exhibit, two floors of historic cars, and ride the Euclid Beach Park Grand carousel!

We will lunch at Exploration: A Zack Bruell Restaurant located in the Museum of Natural History before touring. Meal on your own.



Museum of Natural History

This Museum is a center for world-class scientific research and a great place to visit. Included with your general admission will be a special exhibition docent-led tour of *Built to Survive: Biomechanics*.

Spider webs stronger than steel? Fish that can bite through bricks? Explore the world of biomechanics to

discover the most fascinating marvels of natural engineering—how plants and animals have evolved to survive.

This exhibition was developed by The Field Museum, Chicago, in partnership with the Denver Museum of Nature & Science, with generous support provided by the Searle Funds at The Chicago Community Trust and ITW. Sponsored by Donald F. and Anne T. Palmer.

HOT SPOTS IN CLEVELAND

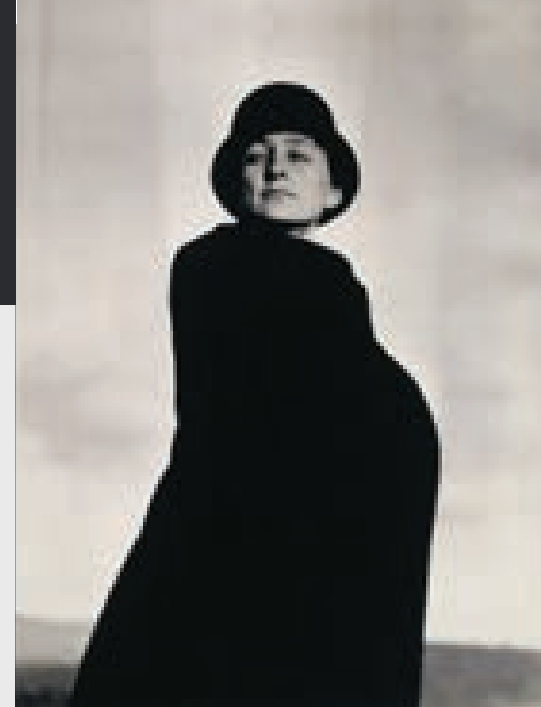
JAM-PACKED FUN-FILLED ITINERARY

DAY 1 — FEBRUARY 27

- 7:30 — Board Bus in Dorr Road lot
- 8:00 — Depart for Cleveland
- 12:00 — Arrive at Cleveland Museum of Art
Lunch in Provenance Café (meal on your own)
- 1:30 — Tour *Georgia O'Keeffe: Living Modern*
- 2:45 — Instructions for ARTLENS Gallery and App
- 3:45 — Free time for permanent collection and gift shop
- 5:45 — Board Bus
- 6:00 — Dinner in Little Italy (included in tour price)
- 7:45 — Board Bus
- 8:00 — Check into Glidden House

DAY 2 — FEBRUARY 28

- 8:00 — Breakfast at Hotel (included in tour price)
Tour home/art collection
- 9:30 — Check out of Hotel
- 9:45 — Board Bus
- 10:00 — Tour Historical Society, *Cleveland Starts Here*
with docent
- 11:00 — Free time for other exhibitions of choice
- 12:00 — Board Bus
- 12:15 — Lunch at Exploration Café, Natural History
Museum (meal on your own)
- 1:00 — Tour Natural History Museum, *Built to Survive:*
Biomechanics with docent
- 2:00 — Free time for other exhibitions of choice
- 2:45 — Board Bus
- 3:00 — Depart Cleveland (snacks offered on board)
- 7:00 — Arrive Campus



Georgia O'Keeffe, c.1920-22, Alfred Stieglitz (American, 1864-1946), Gelatin silver print 11.4 x 9 cm (4 1/2 x 3 1/2 in.), Georgia O'Keeffe Museum, Santa Fe, NM, Gift of the Georgia O'Keeffe Foundation, 2003.01.006



The Cleveland Museum of Art was founded in 1913 and strives to help the broadest possible audience understand and engage with the world's great art. The CMA is renowned for the quality and breadth of its collection, which includes more than 45,000 objects and spans 6,000 years of achievement in the arts. It is home to a multifaceted, innovative experience that encourages exploration of the museum's collection through technology. Come prepared by downloading the free ArtLens App.

Lunch will be available in the Provenance Café upon arrival. It features an open-kitchen concept where patrons can watch chefs create their dishes. Meal on your own.

Georgia O'Keeffe: Living Modern

The adventure begins with *Georgia O'Keeffe: Living Modern*. This exhibition offers a unique look into the fascinating connections between the paintings, personal style, and public persona of one of America's most iconic artists. Throughout her prolific 70-year career, O'Keeffe defied convention and forged a fiercely independent identity that was integral to her art. Showcasing several of her paintings alongside her garments—many shown here for the first time—and photographic portraits of her as a subject, the exhibition reveals O'Keeffe's determination to be strikingly modern not only in her art, but in her life.

Georgia O'Keeffe: Living Modern is organized by the Brooklyn Museum and curated by Wanda M. Corn, Robert and Ruth Halperin Professor Emerita in Art History, Stanford University.